

LorbyLiveTraffic

Installation

Distribution

LorbyLiveTraffic is distributed as a self-extracting installer package.

Installation

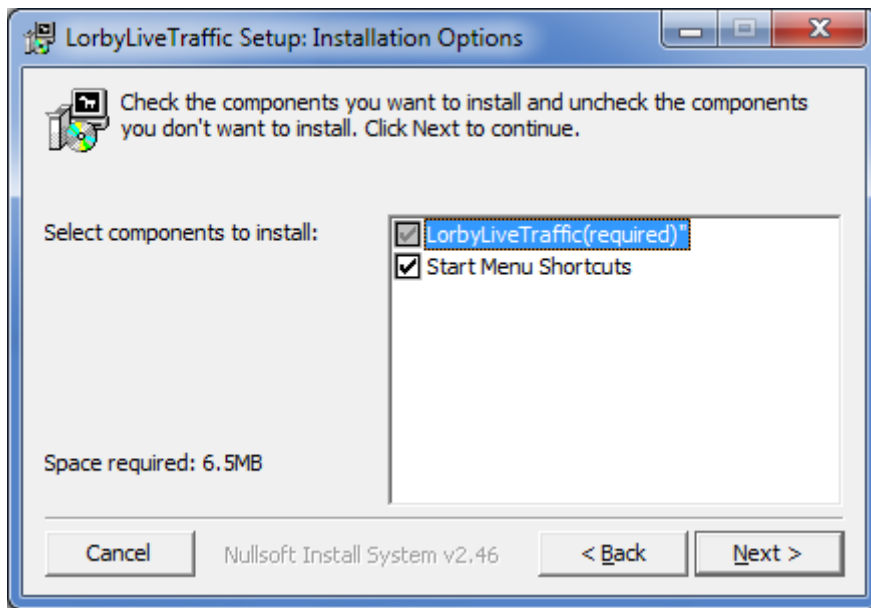
- Please use the installer intended for your sim:
 - FSX boxed or dual install with SE: *LorbyLiveTraffic_Install.exe*
 - FSX SE stand alone: *LorbyLiveTraffic_SE_Install.exe*
 - Prepar3D V2.5: *LorbyLiveTraffic_P3D_Install.exe*
 - Prepar3D V3.x: *LorbyLiveTraffic_P3D_V3_Install.exe*
 - Prepar3D V4.x: *LorbyLiveTraffic_P3D_V4_Install.exe*
 - Prepar3D V5.x: *LorbyLiveTraffic_P3D_V5_Install.exe*

AntiVirus

Some customers reported problems with AntiVirus programs blocking the LorbyLiveTraffic installers. This behaviour is quite normal today unfortunately, as most AntiVirus software applies the simple rule "I don't know you, so you must be bad".

To avoid problems with AntiVirus (AVAST is especially violent) please exclude the LorbyLiveTraffic installer and executables from the AntiVirus scan. Failing to do so may result in installers crashing, even to the point that the computer has to be restarted.

Running the installer:



On the first page you may select optional installation targets:

- “Start Menu Shortcuts”: LorbyLiveTraffic will be added to your Start Menu (advised)

Microsoft .Net 4.8

LLTX requires that .Net 4.8 is installed on your computer.

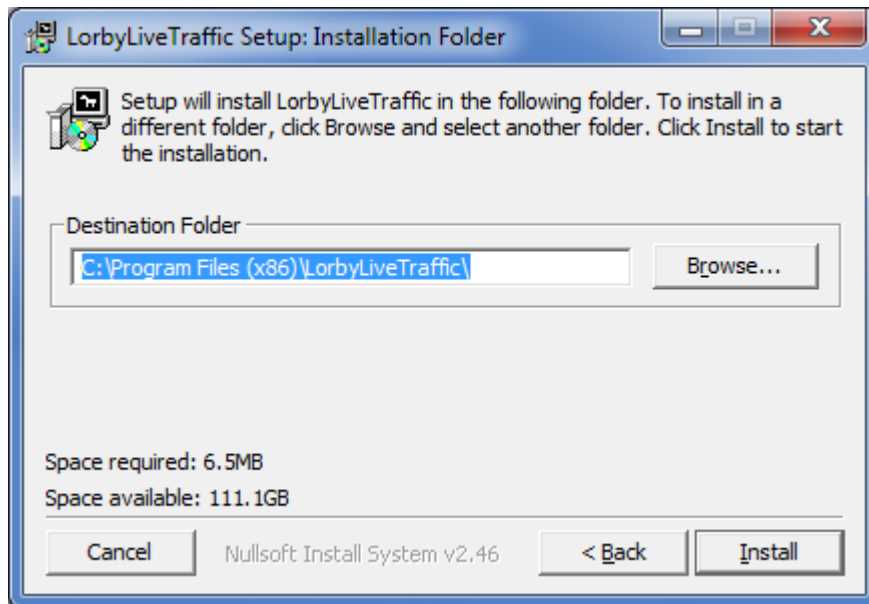
Microsoft C++ 2012 runtimes

The application uses the SQLite open source database. This product requires the vcredist runtime environments version 2012.

Please run both installers for the runtime that have been included in the ZIP file, *vcredist_x64.exe* and *vcredist_x86.exe*.

On the next page you choose the installation path for LorbyLiveTraffic.

THIS IS NOT THE PATH TO YOUR SIMULATOR DIRECTORY, IT IS USED EXCLUSIVELY FOR LorbyLiveTraffic!



- Selecting "Install" will begin the installation